

MAGNETIC™

GAUGE & GAUGE+SWITCH

Designed to measure differential pressure as low as 25 mm of water.

MAGNETIC™ instrument is designed for use in air handling units, pharmaceutical and medical equipments & HVAC. It also finds applications in level, flow & filter resistance measurement. It is compact, lightweight, reliable and most important, affordable.

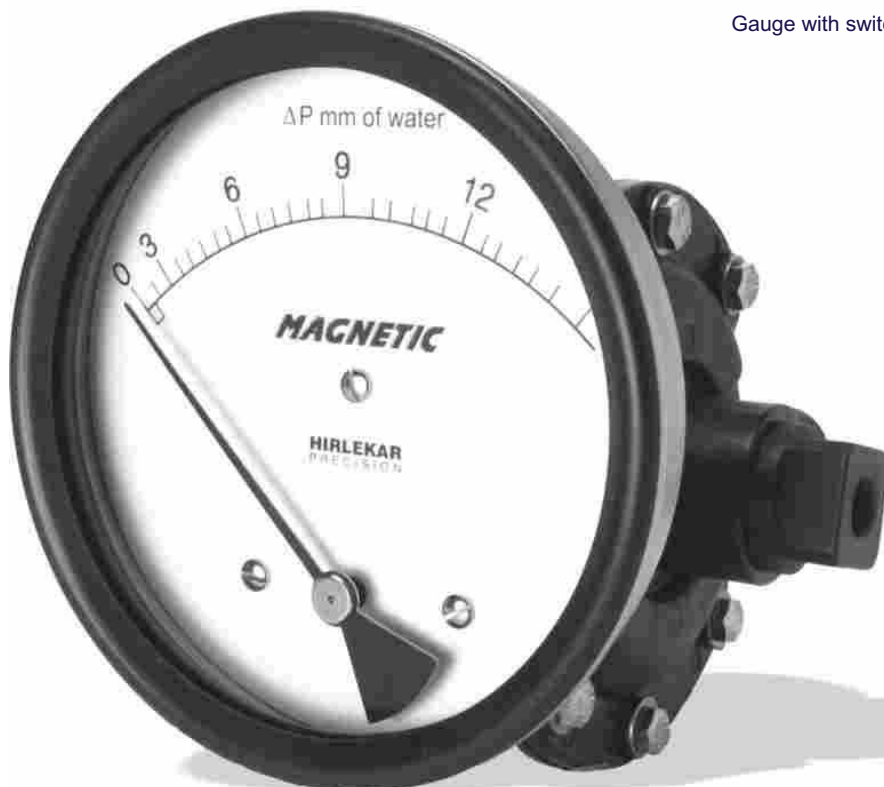
MAGNETIC™ is a quality diaphragm instrument. It's engineering polymer body with a stainless steel case and vibration resistant design, makes it rugged. This instrument is suitable for air and other non corrosive gases & fluids. Its strong magnetic coupling provides consistent performance and smooth pointer movement.

MAGNETIC™ has a DP range from 25 to 1250 mm of water. It has in-line as well as back porting. This instrument is available with a switch. A gauge can also be easily upgraded by adding a switch later by the user.

OEMs can order instruments with their logo on dial.



Gauge with switch



HIRLEKAR
PRECISION

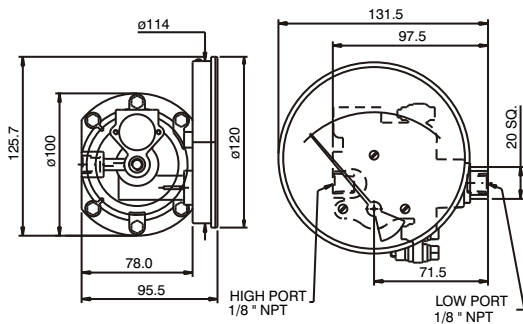
ISO Certified

Reliable

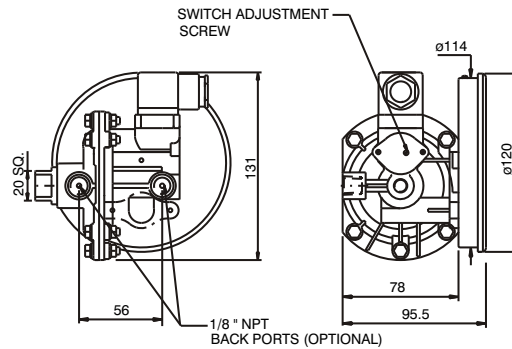
Smooth pointer motion.

Switch can be added anytime.

STANDARD DIMENSIONS

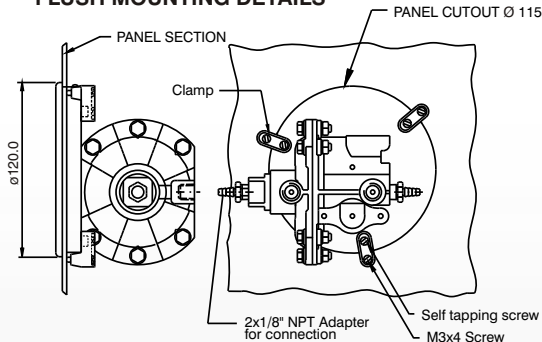


GAUGE+SWITCH WITH REED CONTACTS WITH A DIN PLUG

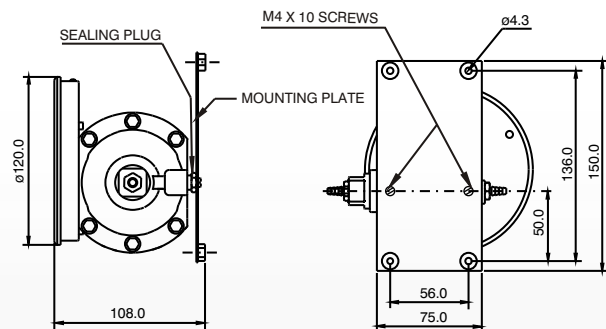


This instrument with its off-center profile can still be easily inserted in a 115 mm panel cutout.

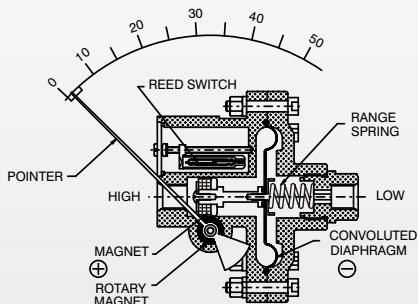
FLUSH MOUNTING DETAILS



SURFACE MOUNTING DETAILS



OPERATING PRINCIPLE :



High and Low pressures are separated by a sensor assembly consisting of a magnet, diaphragm and a range spring. The difference in pressure causes the assembly to move in proportion to the change against the range spring.

A rotary magnet, located in a separate body compartment and isolated from the acting pressures, is rotated by magnetic coupling as per the linear movement of the sensor assembly. A pointer attached to the rotary magnet indicates differential pressure on the dial.

APPLICATIONS :

- Monitor air-handling units.
- Measurement of fan & blower pressure.
- Monitor condition of the filter on laminar flow devices.
- Pressure drop across filters.
- Pressure drops across orifice plate for flow determination.
- Level measurement.
- Spinning machines.

Points to cover in your enquiry.

- Operating pressure.
- Operating temperature.
- Porting.
- Mounting.
- Application in brief.
- Customer logo.

ACCESSORIES INCLUDED :

- Two brass adaptors for tube connection to in-line or back ports.
- Flush mounting kit.
- Two plugs for sealing the port holes (in-line or back) when not in use.

SPECIFICATIONS :

- Body materials : Engineering polymer.
- Protection : IP 65 gauge & switch.
- Working pressure : 35 psi / 2.4 bar.
- Working temp. : 60°C / 140°F Max.
- Differential range : 25 mm to 1250 mm Wc
- Seals : Buna-N, Silicone.
- Porting : In-line or back (user to select).
- Dial size : 112 mm standard.
150 mm flange on request.
- Connections : 1/8" NPT (F).
- Switch : Up to 2 independently Adjustable (40 to 80% of FSR), factory set SPSTs (10VA) or 1 SPDT (5VA) reed switch.
- Weight : 400gms (approx.)
- Accuracy : +/- 3% of FSR (Ascending).
- First marking : At 15% of the FSR.

OPTIONS :

- Colour band.
- Customer logo.
- Dual scale.
- Units other than mm / Inch of water.
- Surface mounting.

STANDARD RANGES :

Range	Least count	Range	Least count
0 - 25mm of water	1.0 mm	0 - 250mm of water	5.0 mm
0 - 50mm of water	1.0 mm	0 - 375mm of water	7.5 mm
0 - 75mm of water	2.5 mm	0 - 500mm of water	10.0 mm
0 - 100mm of water	2.0 mm	0 - 750mm of water	15.0 mm
0 - 125mm of water	2.5 mm	0 - 1000mm of water	25.0 mm
0 - 150mm of water	3.0 mm	0 - 1250mm of water	25.0 mm
0 - 200mm of water	4.0 mm		

Other ranges, units and options are manufactured on request.

Specifications are subject to change without prior notice and any obligation on the part of the manufacturer.

MAGNETIC is a trade mark of Hirlekar Precision Engg. Pvt. Ltd., India

Form MKT:037/Ver 1

HIRLEKAR PRECISION

BHV senzory
Suchdolska 4, 160 00 Praha 6 -Sedlec
Czech Republic
Tel. : +420/220 920 253
Fax : +420/220 922 036
E-mail : bhvsenzory@bhvsenzory.cz
Web site : www.bhvsenzory.cz