

MAGNETIC COUPLING

HIRLEKAR
P R E C I S I O N

**DIFFERENTIAL PRESSURE
INSTRUMENTS**



- Differential pressure measurement
- Low differential pressure measurement
- Flow measurement
- Liquid level measurement

Hirlekar Precision is a strategic & resourceful, yet cost effective vital link in the supply chain management of the customers from demanding industries of developed countries located throughout the world. Efficient communication and logistics management has ensured strong inter dependence with customers spread far and wide. UPS, FedEx and DHL are Hirlekar Precision's shipping partners.

Hirlekar Precision's products are available directly or through competent distributors in more than 45 countries with backing of trained engineers to maximize productivity of our valued customers.

We private label our instruments for many leading instrument manufacturers.



Hirlekar Precision encourages employees to participate in the formation & implementation of corporate goals, to support the efforts in being a socially responsible organization, and to conduct business with the highest degree of integrity & consistency.



Hirlekar Precision operates from multiple locations in Pune, 2.5 hours from Mumbai by car, where more than 40 qualified employees design and produce differential pressure instruments. Close cooperation with customers from an early design stage, use of latest engineering design software & CNC production machines guarantees highest standards in technical design and exceptional manufacturing quality.

Hirlekar Precision beats competitors on quality, delivery, price, performance and service. We have a complete range of differential pressure instruments based on magnetic coupling.



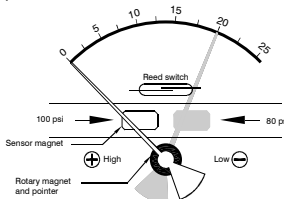
DIFFERENTIAL PRESSURE INSTRUMENTS :

These precision instruments are based on magnetic coupling principle. Indicating mechanism is isolated from the pressure chamber. They are used across filters to indicate clogging in air, gas or fluid lines.

They are compact, cost effective and are available in 6 dial sizes. Models with piston, convoluted diaphragms and rolling diaphragm, cover ranges from 25 mm water column to 70 Kg/cm² differential pressure. One or two SPST & SPDT switching, liquid filling, follower pointer, special porting, calibrations and mountings are available.

BASIC OPERATING PRINCIPLE

High and Low pressures are separated by a sensor assembly consisting of a magnet, diaphragm and a range spring. The difference in pressure causes the assembly to move in proportion to the change against the range spring. A rotary magnet, located in a separate body compartment and isolated from the acting pressures, is rotated by magnetic coupling as per the linear movement of the sensor assembly. A pointer attached to the rotary magnet indicates differential pressure on the dial.



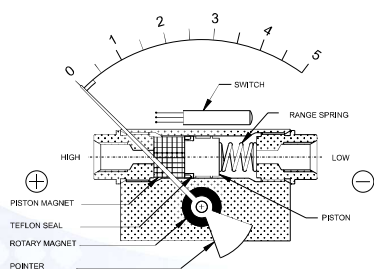
- ✔ Reed switches are located adjacent to the pressure chamber and are activated by the magnetic field.
- ✔ Mount the instrument at least 50 mm away from ferro magnetic surfaces, else calibration may be shifted.
- ✔ Standard instruments are not suitable for oxygen service.

REED SWITCHES :

Reed switches used in our differential pressure instruments are hermetically sealed and housed in an IP 65 / NEMA 4 enclosure. Life expectancy of these switches is between 1 to 5 million cycles depending on working conditions.



PISTON INSTRUMENT

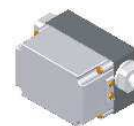


COMBINATIONS

Gauge



Switch



Gauge+switch

(with a terminal strip inside)



Gauge+switch

(with a DIN plug on top)



MOUNTING BRACKETS

Gauge



Gauge+switch

(with a DIN plug)



200 DPG

DP Range : 0 to 0.25 upto 70 bar
0 to 5 upto 1050 psi

Specifications

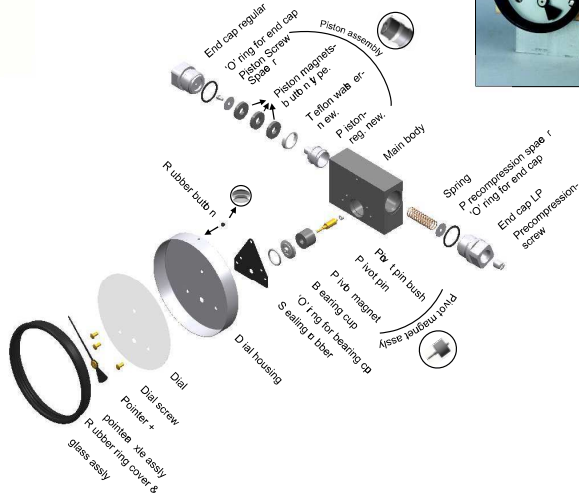
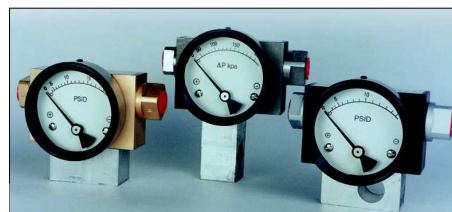
Accuracy	±2% of the FSD (Ascending)
Migration	Minor from high to low port
Range	0-0.25 to 0-70 bar or equivalent range in other units
First marking on the scale	20% of the FSD
Sensing element	Piston
Wetted parts	Body material, SS 302 spring, ceramic magnet & seals
Case material	Stainless steel (SS 304)
Dial size in inch /mm	2", 2.5", 3.5", 4", 4.5", 6" / 50, 63, 80, 100, 115, 150 mm
Mounting	Direct, front flange, 2" pipe & surface mounting
Maximum working pressure	200 bar for Aluminium & Brass, 400 bar for SS & Monel
Maximum process temperature	80°C / 175° F
Body material	Aluminum, Brass, SS 316 & Monel
Seals	Buna-N, Viton & EPDM 'O' rings
Window	Float glass(Std.), toughened glass, acrylic & safety glass.
Connection	1/4" NPT(F) Std. Optional 1/4" BSP(F)
Porting	In-line, rear, bottom, in-line & bottom
Over range protection	Up to the max. working pressure from high & low side
Protection for gauge & switch	IP 65 / NEMA-4

Options

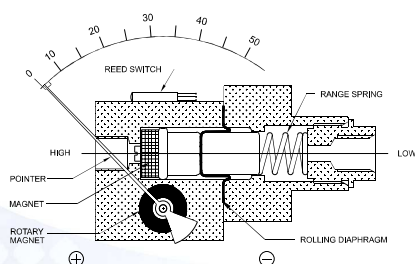
Liquid filling
Red follower pointer (except 2" & 6")
Customer logo
Dual scale
Colour band
Filter mesh in (+) connection
Reverse port (pointer moves from right to left)
Descending calibration

Switches (Adjustable in 20-100% of FSD)

1 or 2 SPSTs with a DIN plug
1 or 2 SPSTs with a terminal strip
1 or 2 SPSTs with a built in relay
1 or 2 SPDTs with a DIN plug
1 or 2 SPDTs with a terminal strip



ROLLING DIAPHRAGM



COMBINATIONS

Gauge



Switch



Gauge + switch

(with a terminal strip inside)



Gauge + switch

(with a DIN plug on top)



MOUNTING BRACKETS

Gauge



Gauge + switch

(with a DIN plug)



200 DGR

DP Range : 0 to 0.25 upto 7 bar
0 to 5 upto 100 psi

Specifications

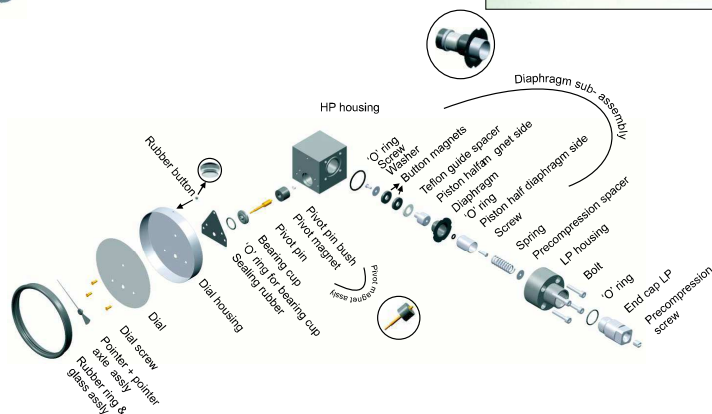
Accuracy	±2% of the FSD (Ascending)
Migration	No migration ; Zero leakage from high to low port
Range	0-0.25 to 0-7 bar or equivalent ranges in other units
First marking on the scale	15% of the FSD
Sensing element	Diaphragm
Wetted parts	Diaphragm, body material, SS 302 spring & ceramic magnet
Case material	Stainless steel (SS 304)
Dial size in inch/mm	2.5", 3.5", 4", 4.5", 6" / 63, 80, 100, 115, 150 mm
Mounting	Direct, front flange, 2" pipe & surface mounting
Maximum working pressure	200 bar / 3000 psi.
Maximum process temperature	80°C / 175° F
Body material	Aluminum, Brass & SS 316
Seals	Buna-N, Viton, EPDM diaphragm & 'O' rings
Window	Float glass(Std.), toughened glass, acrylic & safety glass
Connection	1/4" NPT(F) Std. Optional 1/4" BSP(F) with adaptor
Porting	In-line, rear, bottom, in-line & bottom
Protection for gauge & switch	IP 65 / NEMA-4
Over range protection	Up to the max. working pressure from high side only Never pressurize only LP side beyond 25 bar.

Options

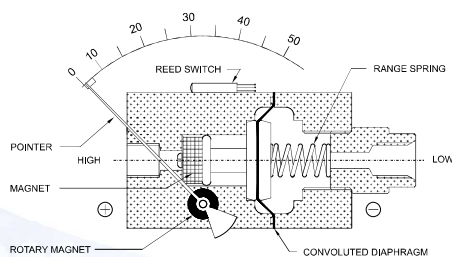
Liquid filling
Red follower pointer (except 6")
Customer logo
Dual scale
Colour band
Filter mesh in (+) connection
Descending calibration

Switches (Adjustable in 30-100% of FSD)

1 or 2 SPSTs with a DIN plug
1 or 2 SPSTs with a terminal strip
1 or 2 SPSTs with a built in relay
1 or 2 SPDTs with a terminal strip
1 or 2 SPDTs with a DIN plug



SMALL CONVOLUTED DIAPHRAGM



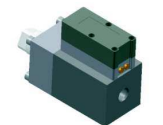
DP Range : 0 to 0 to 0.075 upto 4 bar
0 to 1 upto 60 psi

COMBINATIONS

Gauge

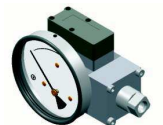


Switch



Gauge + switch

(with a terminal strip inside)



Gauge + switch

(with a DIN plug on top)



Compound Gauge

(Centre Zero)



MOUNTING BRACKETS

Gauge



300 DGC

Specifications

Accuracy	±2% of the FSD (Ascending)
Migration	No migration ; Zero leakage from high to low port
Range	0-0.075 to 0-4 bar or equivalent ranges in other units
First marking on the scale	15% of the FSD
Sensing element	Diaphragm
Wetted parts	Diaphragm, body material, SS 302 spring & ceramic magnet
Case material	Stainless steel (SS 304)
Dial size in inch/mm	2.5", 3.5", 4", 4.5", 6" / 63, 80, 100, 115, 150 mm
Mounting	Direct, front flange, 2" pipe & surface mounting
Maximum working pressure	100 bar / 1500 psi
Maximum process temperature	80°C / 175° F
Body material	Aluminum, Brass, SS 316 & Monel
Seals	Buna-N, Viton, EPDM diaphragm & 'O' rings
Window	Float glass(Std.), toughened glass, acrylic & safety glass
Connection	1/4" NPT(F) Std. Optional 1/4" BSP(F) with adaptor
Porting	In-line, rear, bottom, bottom & vent, in-line & bottom.
Over range protection	Up to the max. working pressure from high side
Protection for gauge & switch	IP 65 / NEMA-4

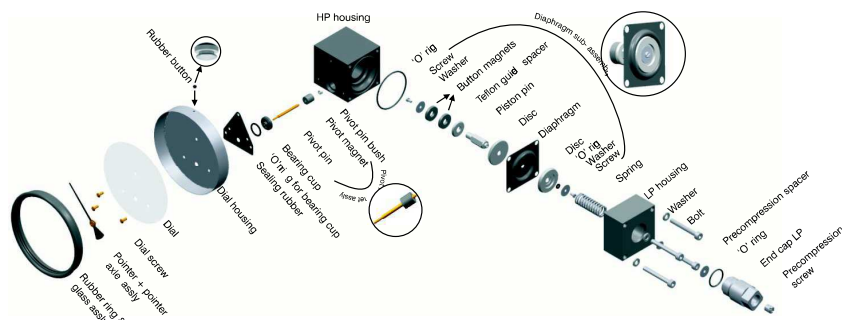
Options

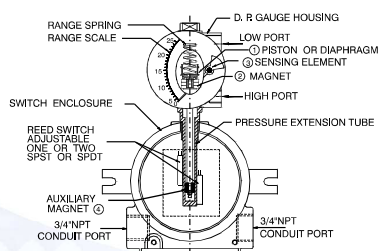
Liquid filling
Red follower pointer (except 6")
Customer logo
Dual scale
Colour band
Filter mesh in (+) connection
Descending calibration

Switches (Adjustable in 30-100% of FSD)

1 or 2 SPSTs with a DIN plug
1 or 2 SPSTs with a terminal strip
1 SPST with a built in relay
1 or 2 SPDTs with a terminal strip
1 or 2 SPDTs with a DIN plug

Instrument can be calibrated with square root scale for flow measurement.





Akron Make



FCG Make



EX-200 DPG, EX-200 DGR, EX-300 DGC, EX-400 DGC,

ΔP Range : 0 to 20 mbar upto 10 bar
0 to 1 upto 150 psi

COMBINATIONS

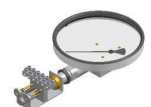
Gauge+switch
(with a terminal strip inside)



Switch



Gauge+switch
(without Ex-proof enclosure)



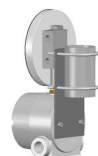
Switch*
(without Ex-proof enclosure)



* Locally available Explosion proof enclosure can be used.

MOUNTING BRACKETS

Gauge+switch
(2" pipe mounting)



Specifications

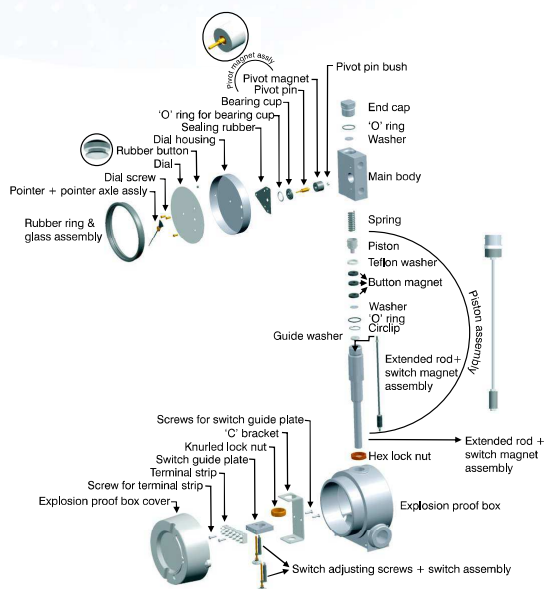
Accuracy	$\pm 2\%$ of the FSD (Ascending)
Migration	As per the model selected
Range	As per the model selected
First marking on the scale	15 or 20% of the FSD, depending on the model selected
Sensing element	As per the model selected
Wetted parts	As per the model selected
Case material	Stainless steel (SS 304)
Dial size in inch/mm	3.5", 4", 4.5", 6", 80, 100, 115, 150 mm
Mounting	As per the explosion proof box drawings
Maximum working pressure	As per the model selected
Maximum process temperature	80°C / 175° F
Body material	Aluminum, Brass & SS 316
Seals	Buna-N, Viton, EPDM diaphragm & 'O' rings
Window	Float glass(Std.), toughened glass, acrylic & safety glass.
Connection	As per the model selected
Porting	Bottom (right side) & back
Over range protection	As per the model selected
Protection for gauge & switch	IP 65 / NEMA-4

Options

Customer logo
Dual scale
Colour band

Switches (As per model selected)

1 or 2 SPSTs with a terminal strip
1 or 2 SPDTs with a terminal strip



Ex-proof enclosure make	Certification	Electrical connection	Mounting
Akron Electric USA	UL, CSA, FM, CENELEC, KEMA / ATEX approved. Compliance to EN 50 014:1971+A1...A5 and EN 50 018: 1977+A1...A3. Ref: UL:E139669 / CSA:LR86146-5 KEMA: 03ATEX2460 U 0539 Ex II 2G EEx d II C	2 X 3/4" NPTF conduit ports on either side as shown	Two slots provided suitable for M6 / 1/4" UNC screw.
FCG India	Compliance to EN 50014: 1977 + A1:1999+A2:1999 and EN 50281-1-1:1998 + A1:2002 Ref: DNV-2006-OSL-ATEX-0075 / Ex II 2 GD EEx d IIC T6	3 X 3/4" ET conduit ports as shown.	Two elliptical holes provided suitable for M6 / 1/4"UNC screw.

How to order 200 DPG, 200 DGR, 300 DGC, 400 DGC

SELECT MODEL

1 Series

200 DPG, 200 DGR, 300 DGC, 400 DGC

2 Type

G Gauge
GS Gauge + Switch
S Switch

3 Body material

A Aluminum
S SS-316
B Brass
M Monel

4 Dial size

2.0 2.0" (50 mm)
2.5 2.5" (63 mm)
3.5 3.5" (80 mm)
4.0 4.0" (100 mm)
4.5 4.5" (115 mm)
6.0 6.0" (150 mm)

5 Connection

4N 1/4" NPT (F) (Std.)
ZZ Special connection sizes using adaptor
4B 1/4" BSP (F)

6 Porting

1 In-line (Std.)
2 Rear / Back
3 Bottom
4 Bottom & Vent
5 Inline & Vent
6 Inline & Bottom

7 Case

SS SS 304 (Std.)
SF SS 304 flange

8 Window

F Glass (Std.)
T Toughened glass
A Acrylic
L Safety glass

9 Seals/Diaphragm

B Buna-N (Std.)
V Viton
E EPDM

10 Switch

Select option & Specifications

0	None
1	One SPST, with a DIN plug †
2	One SPST, with a terminal strip
2A	One SPST, with built in relay
3	Two SPSTs, with a DIN plug †
4	Two SPSTs, with a terminal strip
4A	Two SPSTs, with built in relay
5	One SPDT, with a DIN plug †
6	One SPDT, with a terminal strip
7	Two SPDTs, with two DIN plugs
8	Two SPDTs, with a terminal strip

† DIN plug mounted on the top.

Advantages :

Instrument automatically resets after line surges and cold start.
This eliminates balancing of differential pressure instrument after such events.

Model

Notes

200 DPG	<ul style="list-style-type: none">No mounting bracket for back and bottom portings.Switch not available for gauge with back porting. However, it can be offered in 32mm thick body with switch on top.
200 DGR	<ul style="list-style-type: none">Top vent not available.
300 & 400 DGC	<ul style="list-style-type: none">1.6% accuracy on request.Top vent not available with switch option.
All Models	<ul style="list-style-type: none">Liquid filling will not have follower pointer.Toughened glass not available in 2" (50mm) dial.Safety glass not available in 2" and 2.5" dials.

Switch adjustment range

Model	% FSD	Model	% FSD
200 DPG	20 to 100	300 DGC	30 to 100
200 DGR	30 to 100	400 DGC	40 to 100
600 DGC	40 to 80	Ex	As per selected model

SPST Specifications (AC/DC max)

1 Standard	2	3	4
10 VA	40 VA	100 VA	-
100 V	230 V	300 V	-
0.5 Amp	1 Amp	1 Amp	
Adjustable	Adjustable	Adjustable	

SPDT Specifications (AC/DC max)

1 Standard	2	3	4*
3 VA	5 VA	5 VA	60 VA
30 V	125 V	175 V	400 V
0.3 Amp	0.25 Amp	0.25 Amp	1 Amp
Adjustable	Adjustable	Adjustable	Factory Set

* Available in models 200DPG and 200DGR only.

11 Range

Standard ranges : (Other ranges on request)

200 DPG

Kg/cm ²	0.25	-	0.5	0.75	1	-	1.6	2	2.5	3	3.5	4	5	-	6	7	9	10
bar	0.25	-	0.5	0.75	1	-	1.6	2	2.5	3	3.5	4	5	-	6	7	9	10
mbar	250	-	500	750	1000	-	-	-	-	-	-	-	-	-	-	-	-	-
psi	-	5	8	-	15	20	25	30	-	40	50	60	-	80	-	100	-	-
kPa	25	-	50	75	100	-	160	200	250	300	350	400	500	-	600	700	900	1000

200 DGR

Kg/cm ²	0.25	-	0.5	0.75	1	-	2	2.5	-	4	7
bar	0.25	-	0.5	0.75	1	-	2	2.5	-	4	7
mbar	250	-	-	750	-	-	-	-	-	-	-
psi	-	5	7	-	15	25	30	-	40	60	100
kPa	25	-	50	75	100	-	200	250	-	400	700

300 DGC

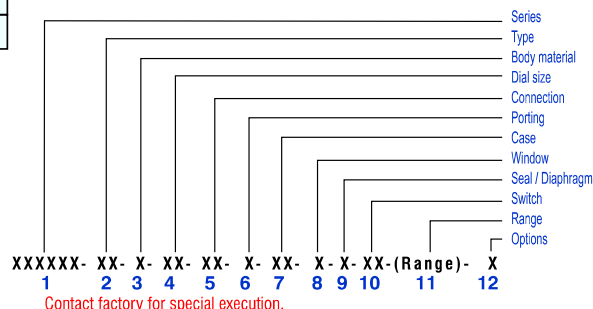
Kg/cm ²	0.075	0.25	-	0.5	0.75	1	-	1.6	2	2.5	3	-	4
bar	0.075	0.25	-	0.5	0.75	1	-	1.6	2	2.5	3	-	4
mbar	75	250	-	-	750	-	-	-	-	-	-	-	-
psi	1	-	5	8	-	15	20	25	30	-	40	50	60
kPa	-	25	-	50	75	100	-	160	200	250	300	-	400

400 DGC

mm H ₂ O	25	50	125	250	600
In. H ₂ O	1	2	5	10	25
mbar	-	5	-	25	60
kPa	0.25	0.5	1.25	2.5	6

Ordering code sequence

Before creating ordering code, please refer model wise notes above.



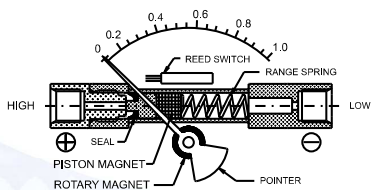
12 Options

- 0 None
- A Glycerine*
- B Red follower pointer on acrylic window *
- C Customer Logo
- D Dual scale
- E Colour band
- F Filter mesh in (+) connection
- G Reverse Port**
- H Descending calibration (long delivery time)
- N NACE
- S Silicone oil*
- I Oxygen service (Contact factory)
- K 32mm thick body
- P DIN plug at back on plastic switch cover
- M1 2" horizontal pipe mounting bracket
- M2 Surface mounting bracket
- M3 2" vertical pipe mounting bracket

* Affects accuracy

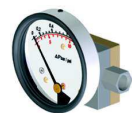
** Pointer moves from right to left & available in 200 DPG only

PISTON INSTRUMENT



COMBINATIONS

Gauge



Gauge+switch (with a DIN plug on top)



Gauge+switch (with a 2 DIN plugs)



MOUNTING BRACKETS

Gauge



Gauge+switch (with a DIN plug)



Gauge (Surface mounting)



DX 10

**DP Range : 0 to 0.25 upto 10 bar
0 to 3.5 upto 140 psi**

Specifications

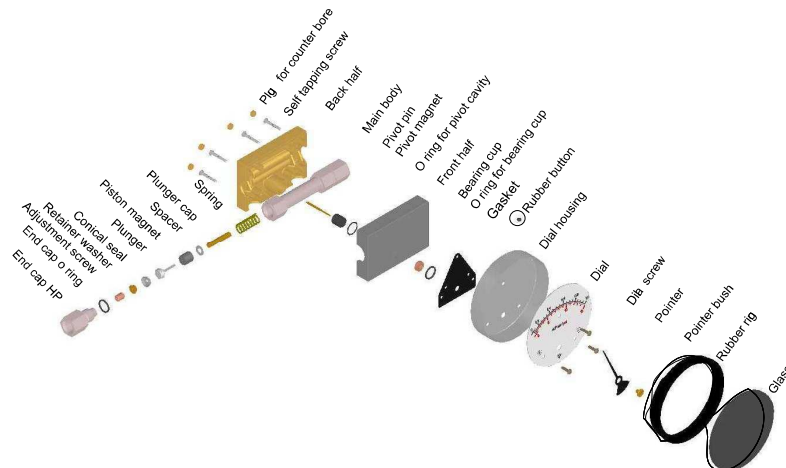
Accuracy	±3% of the FSD (Ascending)
Migration	Minor from high to low port
Range	0-0.25 to 0-10 bar/psi or psi/kPa dual scale
First marking on the scale	15% of the FSD
Sensing element	Magnetic piston with compression spring
Wetted parts	SS 316, SS 302 compression spring, seals & ceramic magnet
Case material	Stainless steel (SS 304)
Dial size in inch / mm	3.5", 4"/80, 100 mm
Mounting	Direct, front flange, 2" pipe & surface mounting
Maximum working pressure	100, 250 & 400 bar.
Maximum process temperature	80°C / 175° F
Enclosure	Engineering Polymer
Seals	Buna-N & Viton
Window	Float glass(Std.), toughened glass, acrylic & safety glass.
Connection	1/4" BSP(F) Std. Optional 1/4" NPT(F)
Porting	In-line, rear & bottom
Over range protection	Up to the max. working pressure from high & low side
Protection for gauge & switch	IP 65

Options

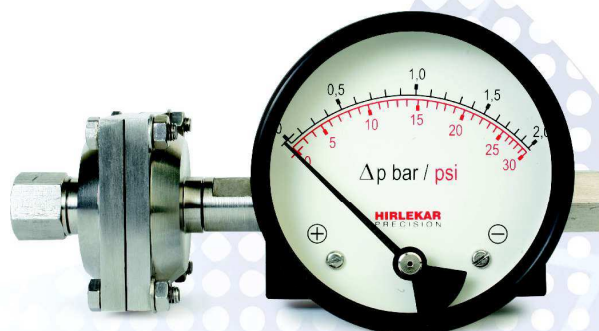
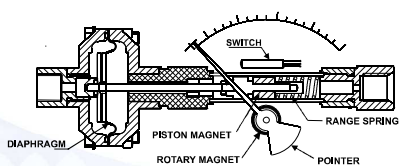
Switches ((Adjustable in 35-100% of FSD)

Liquid filling	1 or 2 SPSTs with a DIN plug
Red follower pointer	1 or 2 SPDTs with a DIN plug
Customer logo	
Strainer in (+) connection	
Colour band	

DP range can be changed easily at site by replacing range spring. (Available only in gauges with colour band or zones without any graduations)



DIAPHRAGM INSTRUMENT

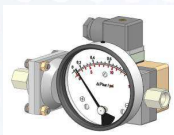


COMBINATIONS

Gauge



Gauge+switch (With a DIN plug on top)



Gauge+switch (with a 2 DIN plugs)



MOUNTING BRACKETS

Gauge

(Surface mounting)



Gauge



Gauge+switch (With a DIN plug)



DX 20

**DP Range : 0 to 0.16 upto 2 bar
0 to 2.4 upto 30 psi**

Specifications

Accuracy	±5% of FSD (Ascending)
Migration	No migration ; Zero leakage from high to low port
Range	0-0.16 to 0-2 bar. bar/psi dual scale
First marking on the scale	15% of FSD
Sensing element	Diaphragm
Wetted parts	SS316 body, SS 302 spring, diaphragm & ceramic magnet
Case material	Stainless steel (SS 304)
Dial size in inch (mm)	3.5", 4" / 80, 100 mm
Mounting	Direct, 2" pipe & surface mounting
Maximum working pressure	100 bar.
Maximum process temperature	80°C / 175° F
Enclosure	Engineering Polymer
Seals	Buna-N, Viton diaphragm & 'O' rings
Window	Float glass(Std.), toughened glass, acrylic & safety glass.
Connection	1/4" BSP(F) Std. Optional 1/4" NPT(F)
Porting	In-line
Over range protection	Up to the max. working pressure from high side
Protection for gauge & switch	IP 65

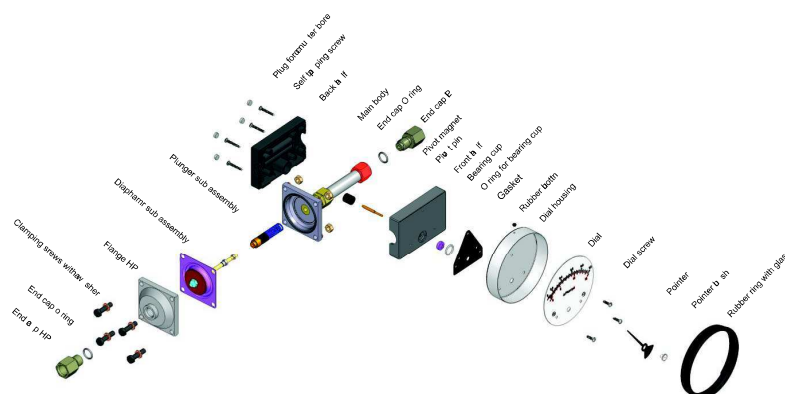
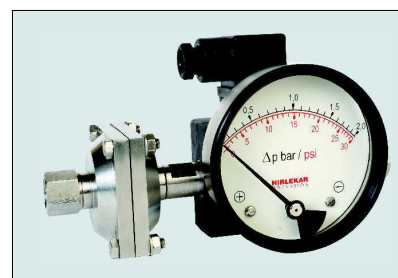
Options

Liquid filling
Red follower pointer
Customer logo
Strainer in (+) connection
Colour band

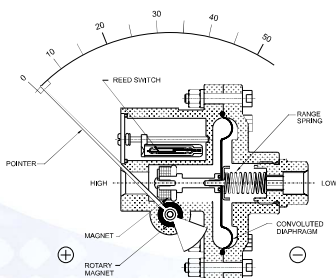
Switches (Adjustable in 35 - 100% of FSD)

1 or 2 SPSTs with a DIN plug
1 or 2 SPDTs with a DIN plug

DP range can be changed easily at site by replacing range spring. (Available only in gauges with colour band or zones without any graduations)



MEDIUM CONVOLUTED DIAPHRAGM



COMBINATIONS

Gauge



Switch



Gauge+switch (With a DIN plug on top)



MOUNTING BRACKETS

Gauge (Flush/Panel mounting)



Gauge (Surface mounting)



Gauge (2" Pipe mounting)



Accessories supplied with the instrument



MAGNETIC

Specifications

Accuracy	±3% of the FSD (Ascending)
Migration	No migration ; Zero leakage from high to low port
Range	0-25 to 0-1250 mm of water
First marking on the scale	15% of the FSD
Sensing element	Diaphragm
Wetted parts	Diaphragm, body material, SS 302 spring & ceramic magnet
Case material	Stainless steel (SS 304)
Dial size in mm (inch)	112mm (4 1/2 ") Std.
Mounting	Flush (Std.), 2" pipe & surface mounting on request
Maximum working pressure	2.4 bar / 35psi
Maximum process temperature	60°C / 130° F
Body material	Engineering polymer
Seals	Buna-N, Viton, EPDM diaphragm & 'O' rings
Window	Float glass(Std.), toughened glass & acrylic on request.
Connection	1/8" NPT (F) Std
Porting	Inline & back (user to select)
Over range protection	Up to the max. working pressure from high side
Protection for gauge & switch	IP 65 / NEMA-4

Options

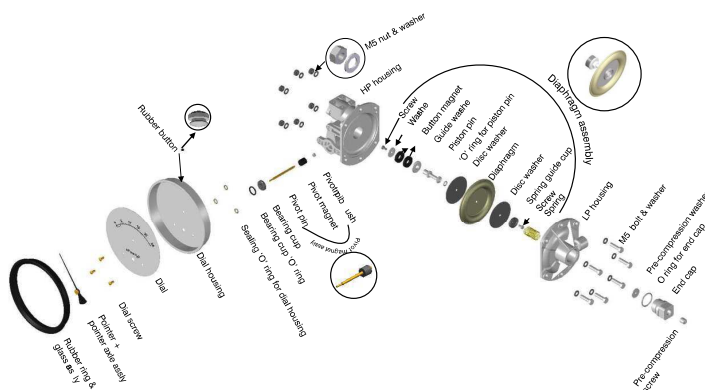
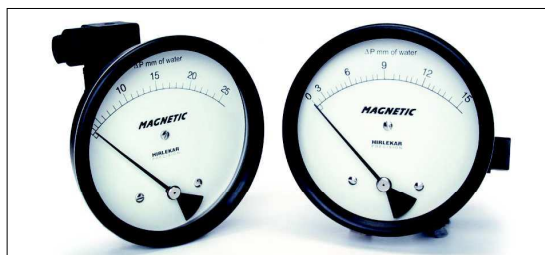
Customer logo
Dual scale
Colour band

Switches (Adjustable in 40-80% of FSD)

1 or 2 SPSTs with a DIN plug
1 SPDT with a DIN plug

Switch can be added anytime on the field.

DP Range : 0 to 25 upto 1250 mm H₂O
0 to 1 upto 50 inch H₂O



How to order DX10, DX 20

SELECT MODEL

- 1 Series** **DX 10, DX 20**
- 2 Basic options** F Float glass (std.) A Acrylic
H Hardened glass
- 3 Liquid filling** G Glycerine * S Silicone *
- 4 Dial size** 3.5 3.5" (80mm) 4.0 4.0" (100 mm)
- 5 Case type** SS SS 304 (Std.) SF SS 304 flange ***
- 6 Ranges** Standard ranges (Other ranges on request)

DX 10	bar	0.25	0.4	0.6	1.0	1.6	2.0	2.5	3.0	4.0	6.0	10.0
	psi	3.5	6.0	9.0	15	24	30	36	45	60	90	140

DX 20	bar	0.16	0.2	0.25	0.4	0.6	1.0	1.6	2.0
	psi	2.4	3.0	3.5	6.0	9.0	15	24	30

- 7 Porting** 1 In-line (Std.) 2 Rear / Back***
3 Bottom***
- 8 Port threading 2x** 4B 1/4" BSP (F) (Std.) 4N 1/4" NPT (F)
ZZ Special connection sizes using adaptor
- 9 Seals** B Buna-N V Viton
- 10 Pressure** 100 100bar 250 250 bar***
400 400 bar***
- 11 Connection** 0 + left / - right R + right / - left *** **
- 12 Mounting** 0 None M1 2" horizontal pipe mounting bracket
M2 Surface mounting M3 2" vertical pipe mounting bracket
M4 Engg. polymer mounting bracket
- 13 Switch** Select option and specifications

SPST Specifications (AC/DC max)

0	None	+	1 Standard	2	3
S1	One SPST, with a DIN plug		10 VA	40 VA	100 VA
S4	Two SPSTs, with DIN plug		100 V	230 V	300 V
			0.5 Amp	1 Amp	1 Amp
			Adjustable	Adjustable	Adjustable

SPDT Specifications (AC/DC max)

S2	One SPDT, with a DIN plug	+	1 Standard	2	3
S3	Two SPDTs, with DIN plug		3 VA	5 VA	5 VA
			30 V	125 V	175 V
			0.3 Amp	0.25 Amp	0.25 Amp
			Adjustable	Adjustable	Adjustable

- 14 Wiring options** W1 DIN plug at top W2 DIN plug on LP side
W3 DIN plug at back W4 2 DIN plugs for 2 SPDTs (1 on LP side and other on top)
- 15 Other options** 0 None
F Follower pointer on acrylic window*
S Filter mesh in (+) connection
C Customer logo
E Color band (Available in single scale only)
- 16 Certifications** 0 None C1 Certificate of conformance
C2 Accuracy and class C3 Material test certificate
C4 Pressure test

* Affects accuracy

** Pointer moves from right to left

*** Only in DX 10

Magnetic 600

- 1 Series** **Magnetic 600**
- 2 Type** G Gauge GS Gauge + Switch
- 3 Window** F Glass (standard) A Acrylic
T Toughened glass
- 4 Seals/Diaphragm** B Buna-N (standard) V Viton
- 5 Switch** 0 None
1 One SPST, with a DIN plug
3 Two SPSTs, with a DIN plug
5 One SPDT, with a DIN plug
- 6 Range** Standard ranges : (Other ranges on request)

mmH ₂ O	25	50	75	100	125	150	200	250	375	500	750	1000	1250
InH ₂ O	1	2	3	4	5	6	8	10	15	20	25	37.5	50
mbar	-	2.5	5.0	7.5	10	12.5	15	20	25	37.5	50	75	100
Pa	125	250	500	750	-	-	-	-	-	-	-	-	-

- 7 Options** 0 None C Customer Logo
D Dual scale E Colour band
M1 2" horizontal pipe mounting bracket
M2 Surface mounting bracket
M3 2" vertical pipe mounting bracket

SPST Specifications :

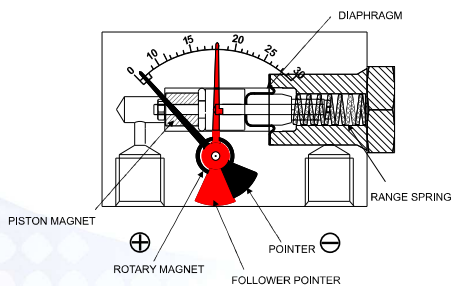
10 VA AC or DC (max)
100 V AC or DC (max)
0.5 Amp AC or DC (max)

Other switches on request

SPDT Specifications :

3 VA AC or DC (max)
30 V AC or DC (max)
0.3 Amp AC or DC (max)

DIAPHRAGM INSTRUMENT



FOR GAS APPLICATION

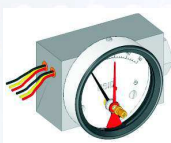


COMBINATIONS

Gauge



Gauge+switch



GX 100

DP Range : 0 to 0.75 upto 2 bar
0 to 10 upto 30 psi

Specifications

Accuracy	±5% of FSD (Ascending)
Migration	No migration ; Zero leakage from high to low port
Range	0-0.75 upto 2 bar/psi dual scale
First marking on the scale	15% of the FSD
Sensing element	Diaphragm
Wetted parts	Body material, SS 302 spring, diaphragm & ceramic magnet
Case material	Stainless steel (SS 304)
Dial size in inch / mm	2.5", 3.5", 4" / 63, 80, 100 mm
Mounting	Direct
Maximum working pressure	100 bar.
Maximum process temperature	80°C / 175° F
Body material	Aluminium
Seals	Buna-N, Viton diaphragm & "O" rings
Window	Acrylic
Connection	1/4" NPT(F) Std. Optional 1/4" BSP(F)
Porting	Bottom (54mm or 55mm C. D.), in-line
Protection for gauge & switch	IP 65
Over range protection	Up to the max. working pressure from high side only. Never pressurize only LP side beyond 25 bar.

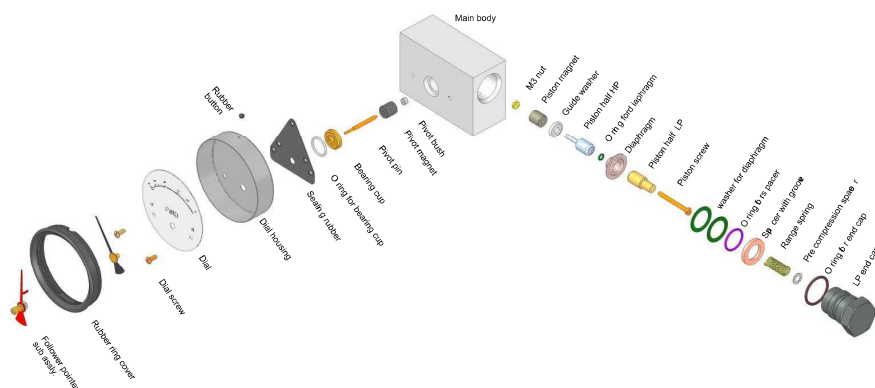
This instrument with 2.5" dial can be directly mounted on ferrous surface.

Options:

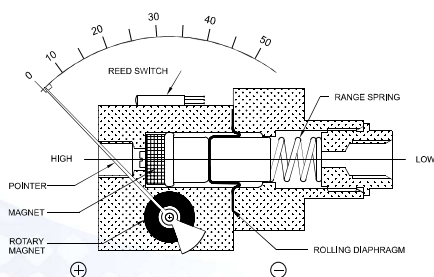
Customer logo
Color band
Red follower pointer (Standard execution for 2.5" dial)

Switches

1 or 2 SPDT switches (Factory set)



ROLLING DIAPHRAGM



FOR VIBRATION APPLICATION



DP Range : 0 to 0.5 up to 3 bar
0 to 7 up to 45 psi

COMBINATIONS

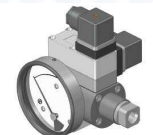
Gauge



Gauge + switch
(with a DIN plug on top)



Gauge + 2 switches
(with 2 DIN plugs)



RD 20

Specifications

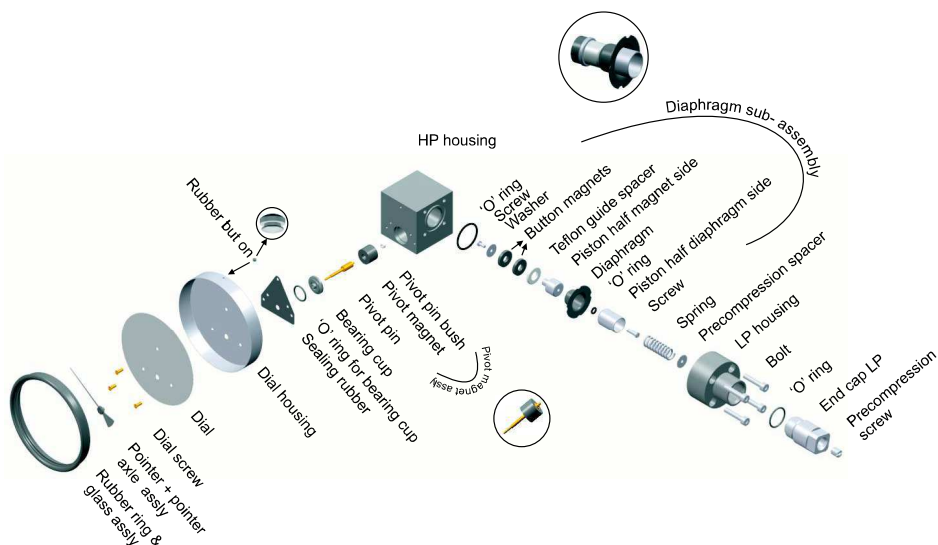
Accuracy	±5% of the FSD (Ascending)
Migration	No migration ; Zero leakage from high to low port
Range	0-0.5 to 0-3 bar or equivalent ranges in other units
First marking on the scale	15% of the FSD
Sensing element	Diaphragm
Wetted parts	Diaphragm, body material, SS 302 spring & ceramic magnet
Case material	Stainless steel SS 304
Dial size in inch /mm	2.5" , 3.5" / 63mm, 80mm
Maximum working pressure	200 bar
Maximum process temperature	120°C with Viton seals & 80°C with Buna - N & EPDM seals
Body material	Aluminum, Brass & SS 316
Seals	Buna-N, Viton, EPDM diaphragm & 'O' rings
Window	Toughened glass
Connection	1/4" BSP(F) Std. Optional 1/4"NPT(F)
Porting	In-line
Protection for gauge & switch	IP 65
Over range protection	Up to the max. working pressure from high side Never pressurize only LP side beyond 25 bar.

Options

Customer logo
Colour band with graduations
Colour zones without graduations
Silicone filling

Switches

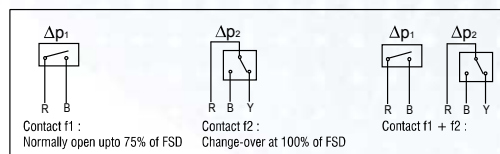
SPST & SPDT combinations.



How to order RD 20

1 Series	RD 20		
2 Type	G Gauge	GS Gauge + Switch	
3 Body material	A Aluminium S SS-316	B Brass	
4 Dial size	2.5 2.5" (63 mm)	3.5 3.5" (80 mm)	
5 Dial face	D1 With graduations (Std.) D2 Color bands with graduations D3 Color zones without graduations		
6 Connection	4B 1/4" BSP (Female) ZZ Special connection sizes using adaptor	4N 1/4" NPT (Female)	
7 Porting	1 In-line		
8 Case	SS SS 304 (Std)		
9 Window	T Toughened glass		
10 Seal	B Buna-N E EPDM	V Viton (Std.)	
11 Switch	0 None f1 One SPST with a DIN plug f1+f1 Two SPSTs with a DIN plug f2 One SPDT with a DIN plug f2+f2 Two SPDTs with two DIN plugs f1+f2 One SPST & one SPDT with two DIN plugs Terminal strip option is available on request.		
12 Standard Ranges	bar	0.5 0.8 1.0 1.2 2.0 3.0	Other ranges on request.
13 Options	0 None C Customer Logo S Silicone oil filling * (For 3.5" dial only) * Affects accuracy		

Circuit diagrams for electrical contacts :



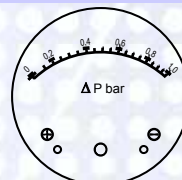
SPST Specifications :

40 VA AC or DC (max)
250 V AC or DC (max)
2 Amp AC or DC (max)

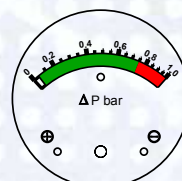
SPDT Specifications :

60 VA AC or DC (max)
250 V AC or DC (max)
1 Amp AC or DC (max)

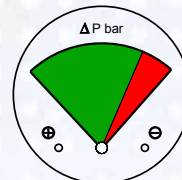
- First switch is always set at 75% of FSD & second at 100% of FSD. Switches are factory set.
- Adjustable switches are also available, however with different electrical ratings



D1 - Dial with graduations only



D2 - Color band with graduations



D3 - Color zones without graduations

GX 100

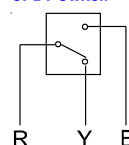
1 Series	GX 100		
2 Type	G Gauge	GS Gauge + Switch	
3 Body material	A Aluminium		
4 Dial Size	2.5 2.5" (Std.) 4.0 4.0" **	3.5 3.5" **	
5 Window	A Acrylic		
6 Case	SS SS304 with a rubber ring(standard)		
7 Range	bar Psi	0.75 1.0 1.6 2.0 10 15 24 30	
8 Porting	1 Inline** 3 Bottom (Std.) (Specify C.D. 54mm or 55mm)		
9 Connection	4N 1/4" NPT(F) Std. ZZ Special connection through adaptors	4B 1/4" BSP (F) on request	
10 Seal	B Buna-N (Std.)	V Viton on request	
11 Option	0 None B Red follower pointer C Customer logo E Color band (Available in single scale only)		
12 Switch	0 None S2 1 SPDT S3 2 SPDTs Note: Please specify switch set point/s while ordering. It can not be changed later.		

**Longer delivery and switch option not available

Switch specifications & connection diagram :

Contact Rating : 3 VA AC(rms) or DC(max.)
Switching current : 0.30 Amp AC(rms) or DC (max.)
Switch Voltage : 30 V AC (rms) or DC (max.)
Lead length : 1.0 meter

SPDT Switch





Argentina



Germany



Mexico



South Africa



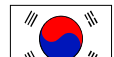
Australia



Hong Kong



Netherlands



South Korea



Austria



India



Oman



Spain



Bahrain



Indonesia



Pakistan



Switzerland



Belgium



Iran



Peru



Taiwan



Canada



Ireland



Philippines



Thailand



China



Israel



Poland



Turkey



Colombia



Italy



Romania



UAE



Czech-Republic



Japan



Russia



UK



Finland



Jordan



Saudi Arabia



USA



France



Malaysia

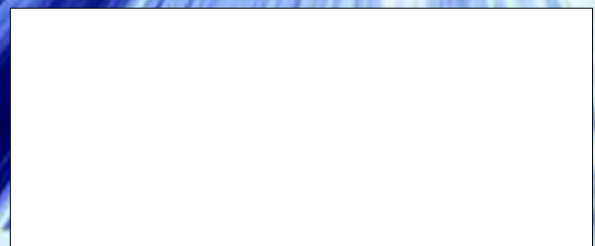


Singapore



Venezuela

Represented by



HIRLEKAR PRECISION

Hirlekar Precision Engineering Pvt. Ltd.

Office :

18-19 Gultekadi Industrial Estate,
Pune 411 037, INDIA
Tel. : + 91- 20 24265743, 24274000
Fax: + 91- 20 24261665,
E-mail: hirlekar@vsnl.com
www.hirlekarprecision.com

Factory:

67, Hadapsar Industrial Estate,
T. P. Scheme II, Ramtekadi,
Pune 411 013, INDIA.
Tel. : + 91 - 20 26823648, 26823649
Fax : + 91 - 20 26871153
Skype: hirlekar-factory