

Chemical seal type K - model K96.3 screwed, flange with closed diaphragm

The chemical seals protect the pressure gauge from the intrusion of the measuring medium. It is used when measuring the pressure of solidifying or crystallising substances.

The advantage of the **K-type** separator is its ease of disassembly and cleaning, as well as the easy replacement of the sealing.

The bottom connection piece of the **model K96.3** can be made of different materials - thus ensuring reliable chemical resistance, as well as different diaphragm materials.

Material

- Body: stainless steel SS 316L (1.4404)
- Diaphragm: stainless steel SS 316L (1.4435), tantalum, nickel, Hastelloy
stainless steel + foil PTFE, coating PTFE (Xylan 1088)
- Sealing: PTFE
- Connection piece: stainless steel SS 316L, 316Ti, 304, PVC, PP, PVDF, ..

Pressure rating

- PN 40 (316L)
- PN 16 (PVC, PP, PVDF)

Process connection (Z thread):

- external thread G1/2", through hole 8 mm (H), possibly M20x1,5
- welding socket, outer D = 25 mm, inner D = 15 mm.

Connection method of manometer or chemical seal (thread F):

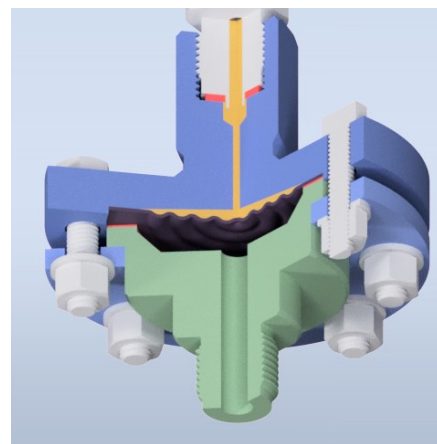
- Direct connection, threaded G1/2" (or M20x1.5, G1/4")

Working temperature (stainless steel connection piece)

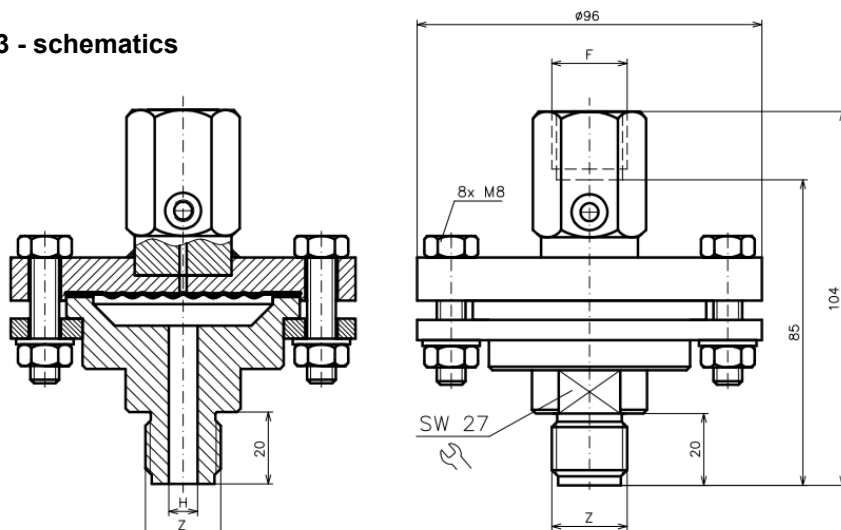
- Medium -20 ... +100°C
- Ambient -20 ... +80°C

Working temperature (plastic connection piece):

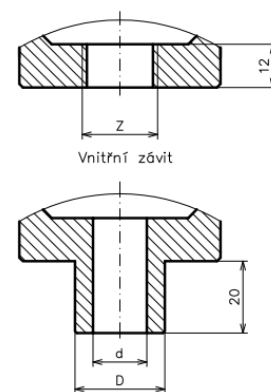
- | | | | |
|-----------|----------------|--------------|-------------|
| | PVDF | PP | PVC |
| • Medium | -20 ... +100°C | 10 ... +60°C | 0 ... +50°C |
| • Ambient | -20 ... +80°C | 10 ... +60°C | 0 ... +50°C |



K96.3 - schematics



External thread with through hole



Extension for welding (gluing)