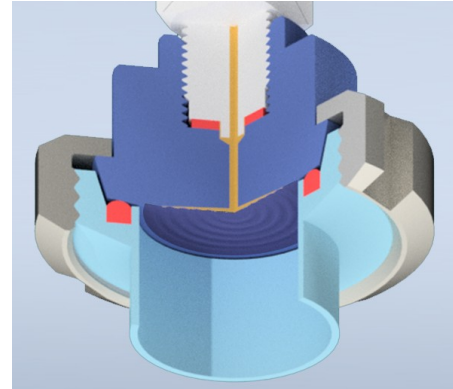


## Chemical seal type M-SMS Food fitting according to SMS standard with lock nut

Chemical seals are used to prevent the measured medium from entering the measuring unit of the pressure gauge. It is used when measuring the pressure of solidifying or crystallising substances, hot liquids or where it is necessary to ensure that the system can be completely cleaned of product residues.

Separators according **type M** according to SMS standard are particularly suitable for the food and pharmaceutical industries. They are sanitizable and therefore suitable for CIP, SIP.

They comply with EC 1935/2004 and EC 2023/2006 on hygiene requirements for products in direct contact with food.



### Material

- Diaphragm stainless steel SS 316L / 1.4435
- Body stainless steel SS 316L / 1.4404
- Wetted surfaces are polished to a maximum roughness of Ra 0.6

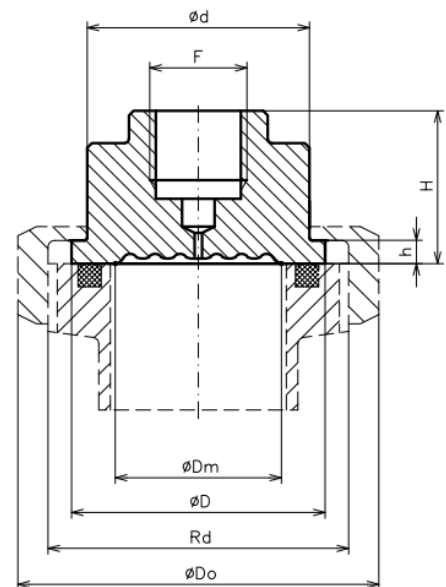
### Working temperature

- Medium -20 ... +100°C
- Ambient -20 ... +60°C
- Short-term sanitation up to 130°C
- Other conditions on request



### Basic types of M-SMS chemical seal

BHV	PN	F	Ø Dm	Ø D	Ø d	H	h	Ø Do	Rd
type	[bar]		[mm]						
M25-SMS	40	G 1/4"	23	35	31,5	32	4	51	40 x 1/6
		G 1/2"	23	35	31,5	32	4	51	40 x 1/6
M38-SMS	40	G 1/4"	38	54,8	48	48	5	74	60 x 1/6
		G 1/2"	38	54,8	48	48	5	74	60 x 1/6
M51-SMS	25	G 1/2"	48	65	59,5	38	5	84	70 x 1/6



### Minimum recommended pressure gauge range

Type of chemical seal	Nominal gauge size	
	DN 63	DN100
M25-SMS	6 bar	-
M38-SMS	1,0 bar	2,5 bar
M51-SMS	0,6 bar	1,0 bar

### Assembly with measuring instrument

The most common assembly of the chemical seal is with a manometer or transmitter by direct connection (F thread). It can also be adapted for a variant with an extended neck or cooler or capillary line.