

Chemical seal type P flange according to ANSI B 16,5 / RF with flushed diaphragm flange

The chemical seals protect the pressure gauge from the intrusion of the measuring medium. It is used for pressure measurement of solidifying or crystallising substances, aggressive substances (acids, alkalis, etc.) or hot substances (variants with cooler or capillary)

The flanges can be completed with both pressure transmitters and pressure gauges. Connection is by thread, weld or capillary line.

Dimensional standard

- According to **ANSI B 16.5 / RF** (rough sealing area)
- Other designs to **ANSI B 16.5 (FF, RTJ, ...)**

Material

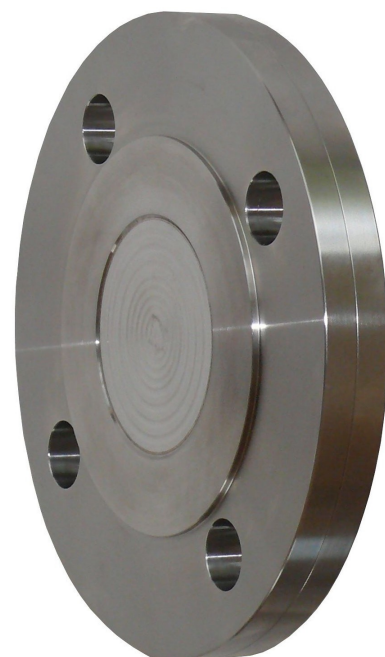
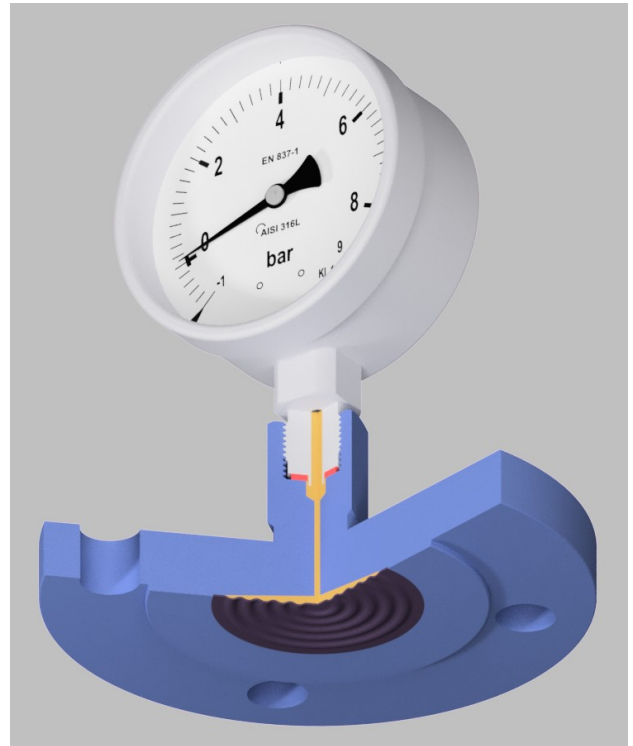
- Diaphragm: stainless steel SS 316L / 1.4435 (other on request)
- Body: stainless steel SS 316L / 1.4404)

Working temperature

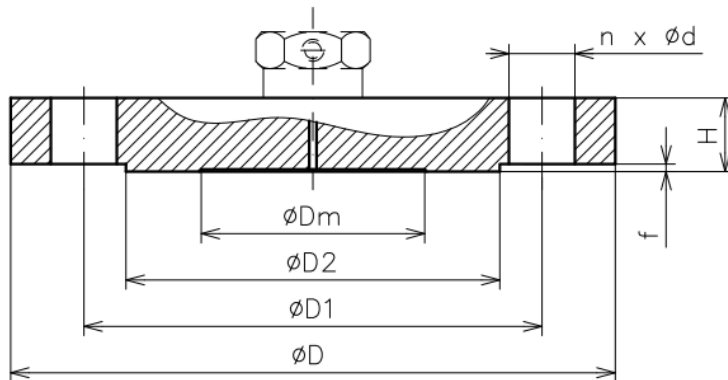
- Medium: -20 ... +100 °C
- Ambient: -20 ... +60°C
- other conditions on request

Assembly with measuring instrument

- direct connection (threaded)
- with an extended neck
- with cooler (finned, capillary)
- with capillary line (straight or angled connection)



Dimension Table (ANSI B 16.5/RF)



ANSI B 16,5 / RF										
Type BHV	Size		Dimensions (mm)							Number of holes
	DN [inch]	PN [class]	øDm	øD	H	ød	øD1	f	øD2	
	½	150	18	95	13	16	60.5	1,6	35	4
	½	300	18	95	16	16	66.5	1,6	35	4
	¾	150	23	100	15	16	70	1,6	43	4
	¾	300	23	120	17,5	20	82.5	1,6	43	4
	1	150	28	110	16	16	79.5	1,6	51	4
	1	300	28	125	19	20	89	1,6	51	4
	1 ½	150	42	130	19	16	98.5	1,6	73	4
	1 ½	300	42	155	22	22	114.5	1,6	73	4
	1 ½	600	42	155	29.5	22	114.5	6,4	73	4
	1 ½	1500	42	180	39	30	124	6,4	73	4
	1 ½	2500	42	205	51.5	33	146	6,4	73	4
	2	150	60	150	21	20	120.5	1,6	92	4
	2	300	60	165	24	20	127	1,6	92	8
	2	600	60	165	32	20	127	6,4	92	8
	2	1500	60	215	45	26	165	6,4	92	8
	2	2500	60	235	57.5	30	171.5	6,4	92	8
	3	150	89	190	26	20	152.5	1,6	127	4
	3	300	89	210	30	22	168.5	1,6	127	8
	3	600	89	210	38.5	22	168.5	6,4	127	8
	3	900	89	240	45	26	190.5	6,4	127	8
	3	1500	89	270	54.3	33	203	6,4	127	8
	3	2500	89	305	73	36	228.5	6,4	127	8
	4	150	89	230	26	20	190.5	1,6	158	8
	4	300	89	255	33,5	22	200	1,6	158	8
	4	400	89	255	41.5	26	200	6,4	158	8
	4	600	89	275	45	26	216	6,4	158	8
	4	900	89	295	51	32	235	6,4	158	8
	4	1500	89	310	60.5	36	241.5	6,4	158	8
	4	2500	89	355	83	42	273	6,4	158	8

Roughness of the front surface:

Type of front surface	Roughness by Ra [µm]	Note
RF, FF	up to 6,3	Smooth sealing surface
RTJ	up to 1,6	O-ring seal
M&F, T&G	up to 3,2	Fitting - groove, tongue