

Chemical seal type S - Pan-cake cell-type

The Chemical seals protect the pressure gauge from the intrusion of the measuring medium. It is used when measuring the pressure of solidifying, crystallising, aggressive or hot substances.

Type S chemical seals are designed for pressure measurement in combination with capillary connected gauges.

They are attached to the pipe or container by clamping between two flanges



Dimensional standard

- according to EN 1092-1/B (rough sealing area)
- according to ANSI B 16.5 / RF (rough sealing area)
- Other designs according to EN 1092-1 / x (tongue, groove)
- other designs to ANSI B 16.5 / x (tongue, groove)

Material

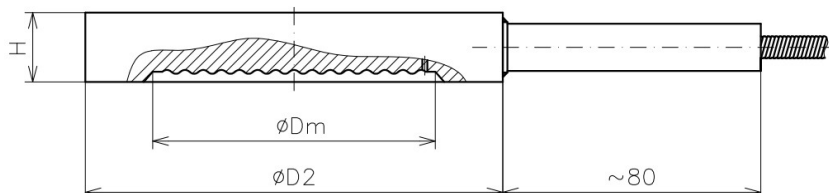
- Diaphragm stainless steel SS 316L / 1.4435 (other material on request)
- Body stainless steel SS 316L / 1.4404

Working temperature:

- Medium -20 ... +400 °C
- Ambient -20 ... +60°C
- other conditions on request

Chemical seal type S (Pan-cake) - table of dimensions, basic types

(dimensions not shown are based on flange standards)



Type BHV	EN 1092-1 / B		ANSI B 16,5		Dimensions (mm)		
	DN	PN	DN [inch]	PN [class]	ØDm	ØD2	H
S25	25	10 – 250			34	68	22
S32	32	10 – 250			38	78	22
S40	40	10 – 250			48	88	22
S50	50	10 – 250			60	102	22
S65	65	10 – 250			78	122	22
S80	80	10 – 250			89	138	22
	100	10 – 16			89	158	22
	100	25 – 250			89	168	22
			1 ½"	150 – 2500	48	73	22
			2"	150 – 2500	60	92	22
			3"	150 – 2500	89	127	22
			4"	150 – 2500	89	158	22

Pressure transducer TSZ or DMP331/333 with direct mounting on **type S chemical seal**

